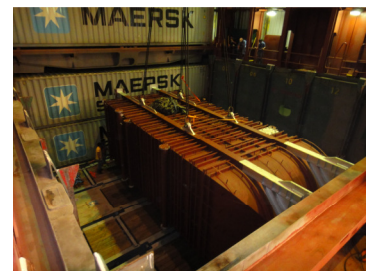


Summer 2010

Lately we have been involved in various projects - including several projects where we loaded heavy and large objects either as "Out of Gauge" or "Break Bulk" onboard container ships in order to optimize both freight rate and transit time.

Most recently, we loaded a 100 mtons / 217 cubic meter boiler as "break bulk" on a container line from Haiphong, Vietnam, transhipped it in Hong Kong, Rotterdam and Oostende port and trucked it to site.

The boiler was loaded aboard in Haiphong and Hong Kong by floating crane on flat racks to even out the pressure.



The transit time from Haiphong port to delivery on site was 40 days including three transshipments.

For your reference, we can inform as an example, that presently the transit time from Shanghai to Rotterdam is about 27 days.

Do not hesitate to contact us if you should be in need for an offer based on this alternative mode of transporting heavy / large cargo.

As agent to Tschudi Project Transports AS, Oslo

Tschudi Project Transport
Tschudi Shipping Denmark A/S
Kongevejen 272A
2830 Virum

phone
fax
email
web

+45 4583 0492
+45 4583 1707
contact@tschudiprotrans.com
www.tschudiprotrans.com

A company within
the Tschudi Group